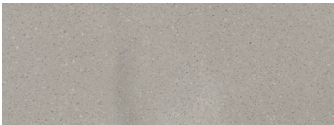




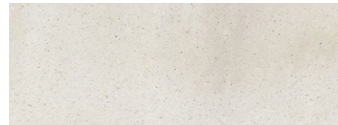
# CORIDESIGN

## Farbpalette CORIAN®

### Preisgruppe 2



ARTISTA BEIGE / ARB  
(PG 2 / \* ~ »)



ARTISTA CANVAS / ARC  
(PG 2 / \* K »)



ARTISTA DRIFT / ARF  
(PG 2 / \* K »)



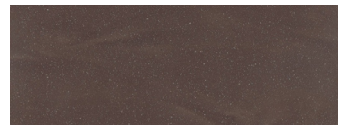
ARTISTA DUST / ARD  
(PG 2 / \*\* ~ ~ »)



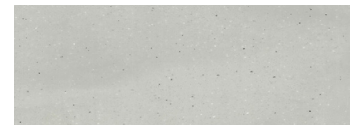
ARTISTA GRAY / ARG  
(PG 2 / \* ~ K »)



ARTISTA MIST / ARM  
(PG 2 / \*\* ~ »)



ARTISTA MOCHA / ARO  
(PG 2 / \*\* ~ »)



ARTISTA SAGE / ARE  
(PG 2 / \* K »)



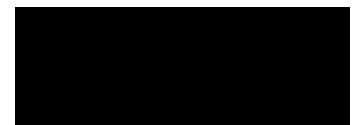
AURORA / AR  
(PG 2 / \* K)



DEEP CLOUD / DX  
(PG 2 / \*\* ~ ~)  
NCS: S 6500-N / RAL: 7004



DEEP ESPRESSO / KS  
(PG 2 / \*\*)  
NCS: S 8502-R / RAL: 8022



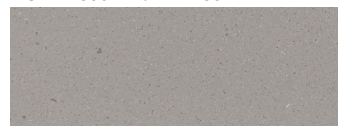
DEEP NOCTURNE / WY  
(PG 2 / \*\*)  
NCS: S9000-N / RAL: 9005



DEEP SABLE / JY  
(PG 2 / \*\* ~)  
NCS: S 7005-Y20R / RAL: 7022



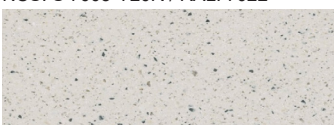
DEEP TITANIUM / DU  
(PG 2 / \*\* ~)  
NCS: S 8005-N / RAL: 7021



DOVE / DV  
(PG 2 / \* K)



EVEREST / EV  
(PG 2 / \* K)



EXCAVAGE / EXV  
(PG 2 / \* K)



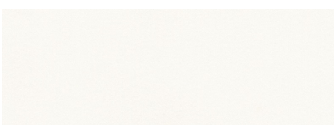
HOT / DH  
(PG 2 / \*\*\*)  
NCS: S 2070-B / RAL: 3031



LAGUNA / LGN  
(PG 2 / \*\*\* ~ ~)  
NCS: S 7020-R80B / RAL: 5013



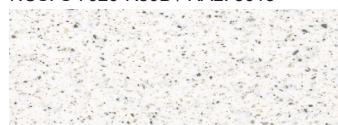
LINEN / LN  
(PG 2 / \* K)



SALT / 6V  
(PG 2 / \* ~ K ☼)



SPARKLING WHITE / 4B  
(PG 2 / \* K ▲)



STONIQUE / SQ  
(PG 2 / \* K)



VENARO WHITE / VW  
(PG 2 / \* K »)



VERDANT / VDT  
(PG 2 / \*\*\* ~ ~)  
NCS: S6010-B70G



WHITE JASMINE / WJ  
(PG 2 / \* K)

Die hier dargestellten Farben können aufgrund des Drucks von den tatsächlichen Farben abweichen, und können nicht die volle Ästhetik wiedergeben. Materialmuster können Sie bei der CORI-DESIGN AG bestellen.