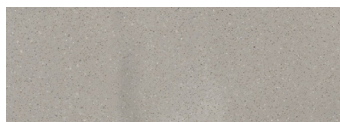




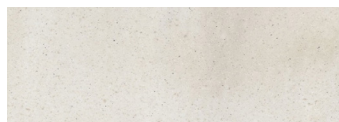
CORIDESIGN

Farbpalette CORIAN®

Preisgruppe 2



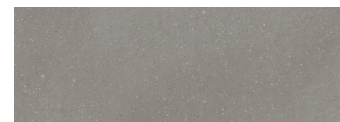
ARTISTA BEIGE / ARB
(PG 2 / * ~ »)



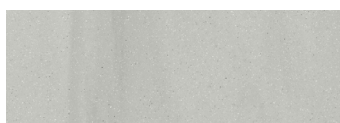
ARTISTA CANVAS / ARC
(PG 2 / * K »)



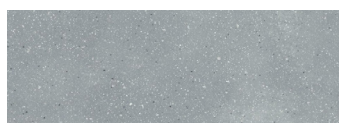
ARTISTA DRIFT / ARF
(PG 2 /)



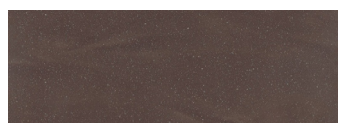
ARTISTA DUST / ARD
(PG 2 / ** ~ ~ »)



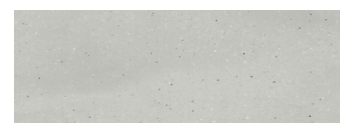
ARTISTA GRAY / ARG
(PG 2 / * ~ K »)



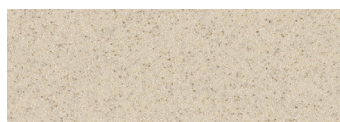
ARTISTA MIST / ARM
(PG 2 / ** ~ »)



ARTISTA MOCHA / ARO
(PG 2 /)



ARTISTA SAGE / ARE
(PG 2 / * K »)



AURORA / AR
(PG 2 / * K)



DEEP CLOUD / DX
(PG 2 / ** ~ ~)
NCS: S 6500-N / RAL: 7004



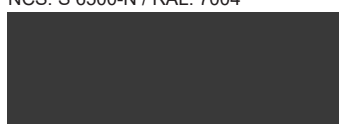
DEEP ESPRESSO / KS
(PG 2 / **)
NCS: S 8502-R / RAL: 8022



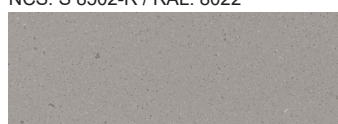
DEEP NOCTURNE / WY
(PG 2 / **)
NCS: S9000-N / RAL: 9005



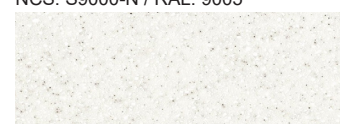
DEEP SABLE / JY
(PG 2 / ** ~)
NCS: S 7005-Y20R / RAL: 7022



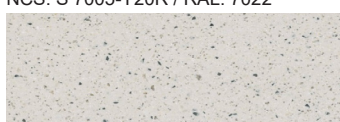
DEEP TITANIUM / DU
(PG 2 / ** ~)
NCS: S 8005-N / RAL: 7021



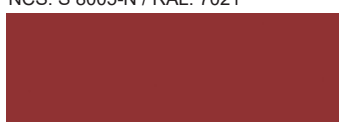
DOVE / DV
(PG 2 / * K)



EVEREST / EV
(PG 2 / * K)



EXCAVAGE / EXV
(PG 2 / * K)



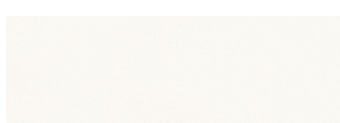
HOT / DH
(PG 2 / ***)
NCS: S 2070-B / RAL: 3031



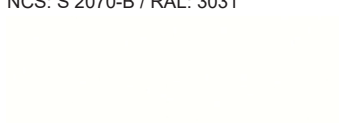
LAGUNA / LGN
(PG 2 / *** ~ ~)
NCS: S 7020-R80B / RAL: 5013



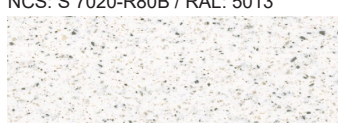
LINEN / LN
(PG 2 / * K)



SALT / 6V
(PG 2 / * ~ K ☼)



SPARKLING WHITE / 4B
(PG 2 / * K ▲)



STONIQUE / SQ
(PG 2 / * K)



VENARO WHITE / VW
(PG 2 / * K »)



VERDANT / VDT
(PG 2 / *** ~ ~)
NCS: S6010-B70G



WHITE JASMINE / WJ
(PG 2 / * K)

Die hier dargestellten Farben können aufgrund des Drucks von den tatsächlichen Farben abweichen, und können nicht die volle Ästhetik wiedergeben. Materialmuster können Sie bei der CORI-DESIGN AG bestellen.